



Using **now** with an Apple Mac

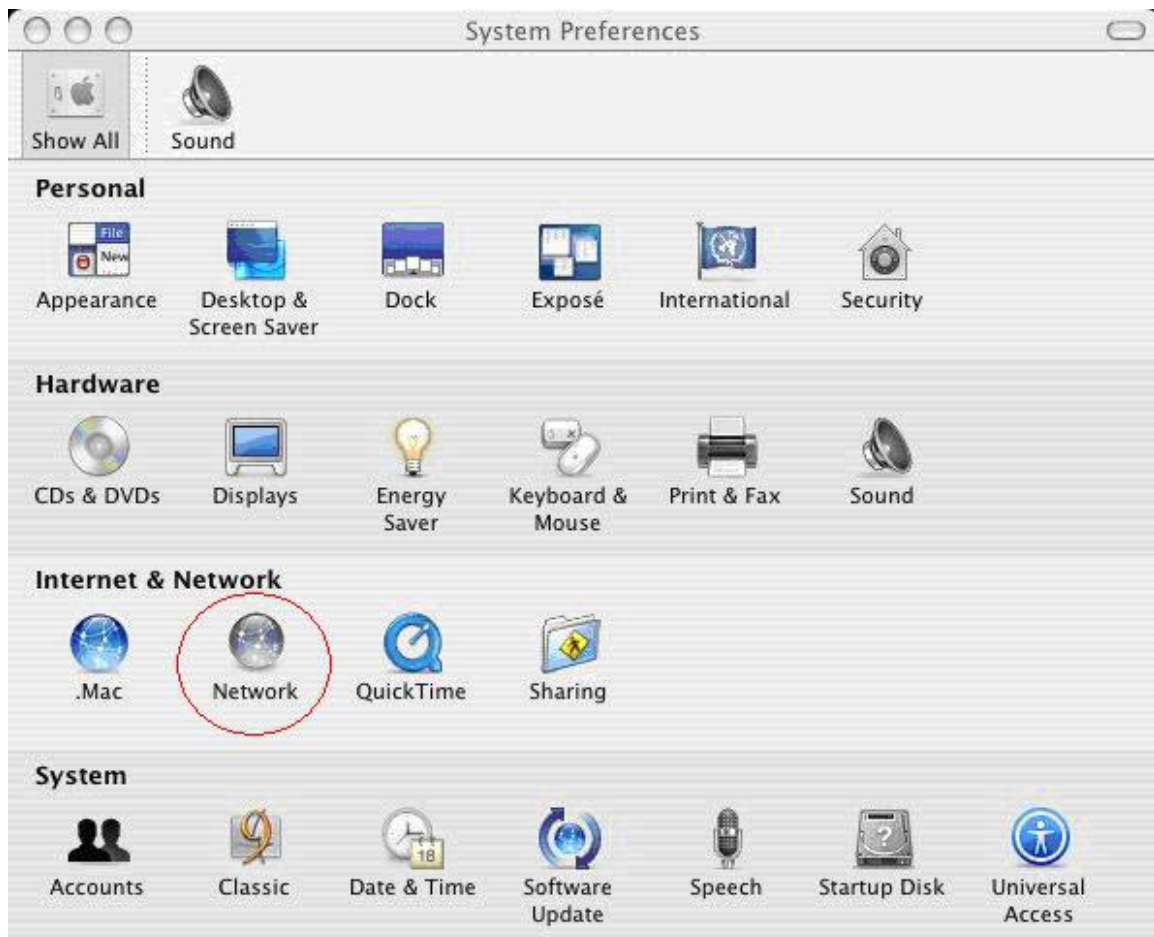
The minimum requirements for an Apple Mac are OS X version 10.3.1 or higher with a spare Ethernet connection.

Power on the modem and connect it to your Mac using the Ethernet cable supplied. Wait for the modem to get a signal (this may take up to 30 seconds).

Step 1

Click on the apple icon in the top left-hand corner of the screen and select 'System Preferences'.

Click on the 'Network' icon.



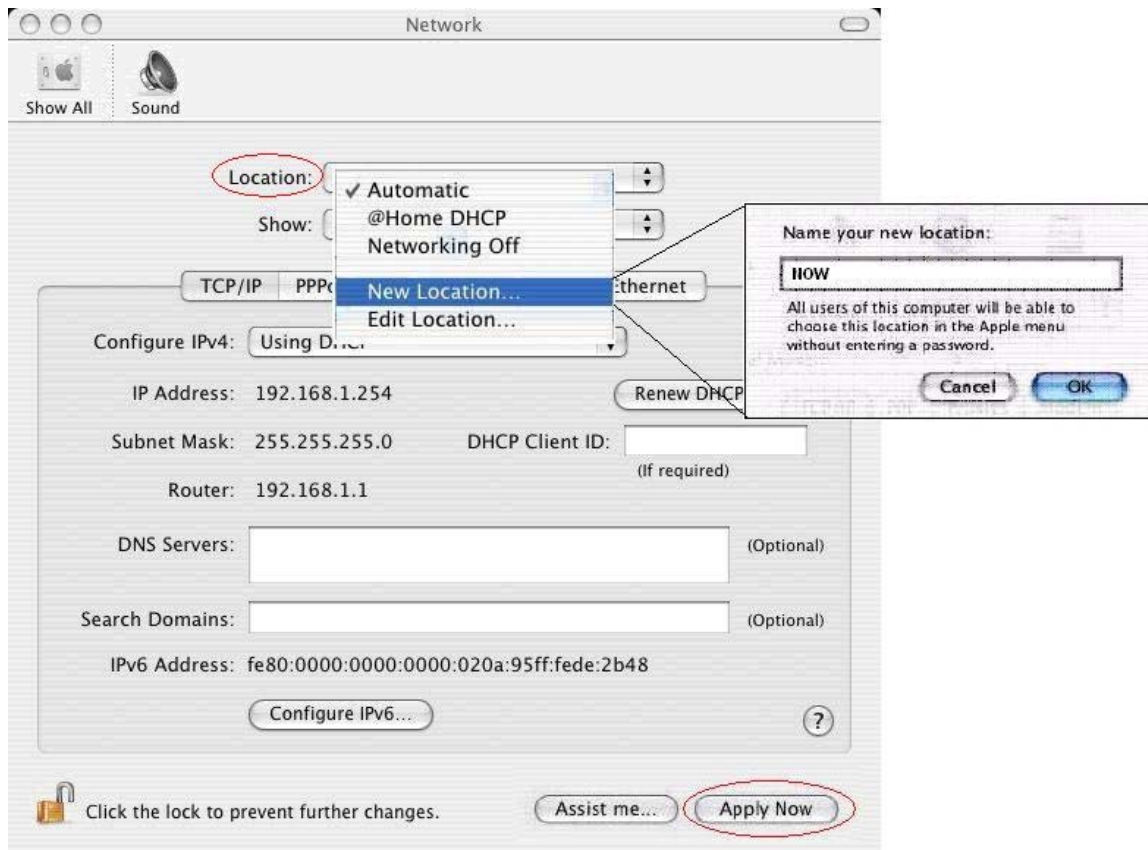
Step 2

You are presented with the 'Network' window.

From the 'Location' drop down menu, select 'New Location'.

Type in "Now" as the name.

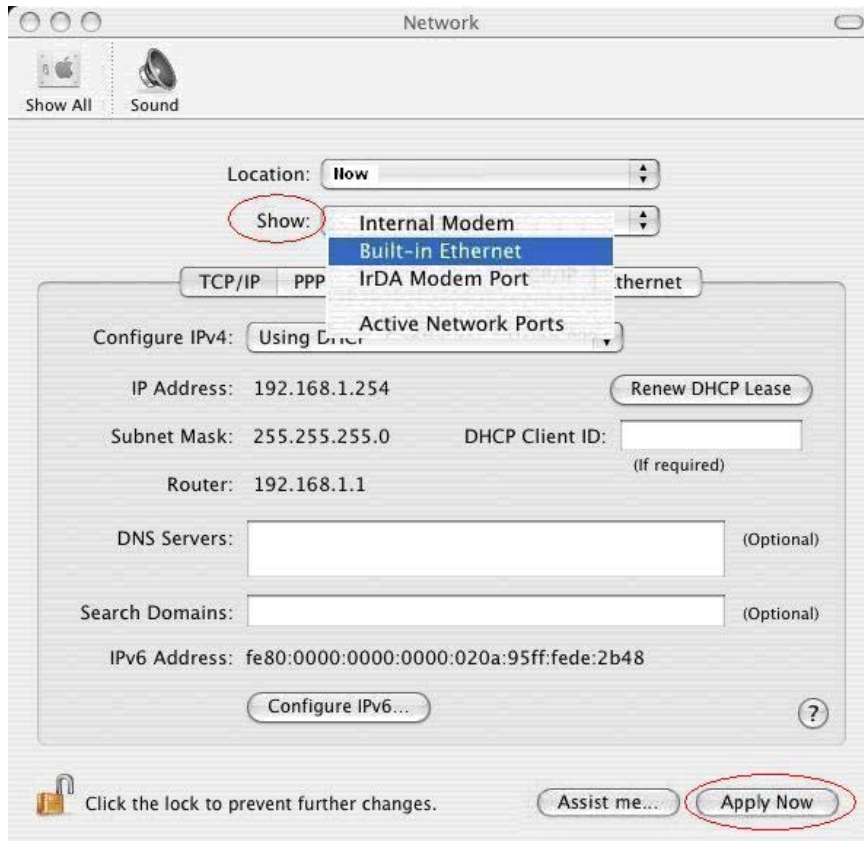
Click OK.



Step 3

From the 'Show' drop down menu, select 'Built in Ethernet'.

Click 'Apply Now'.



Step 4

Click on the TCP/IP tab:



Ensure that the 'Configure IPv4' field is set to 'Using DHCP'.

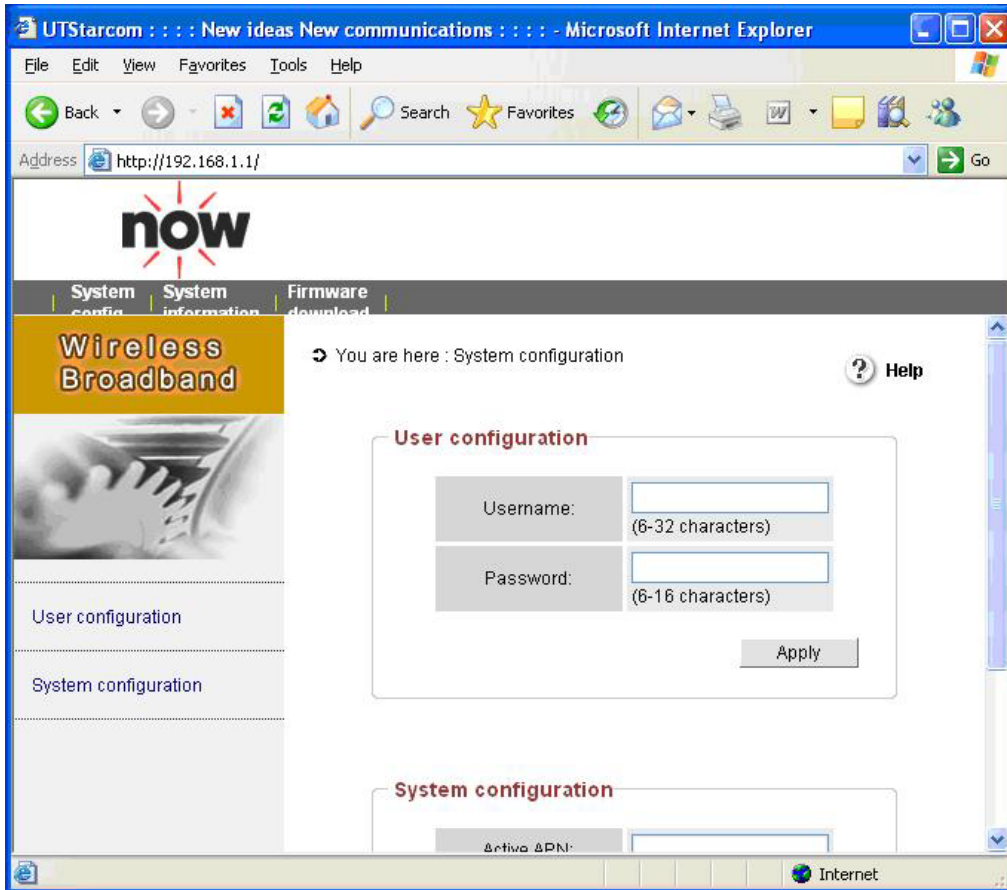
Click 'Apply Now'.

The IP address should be displayed as 192.168.1.254 (as in the screen above).

Step 5

Now open a Safari page and go to the address <http://192.168.1.1>

You will see the **now** setup page.

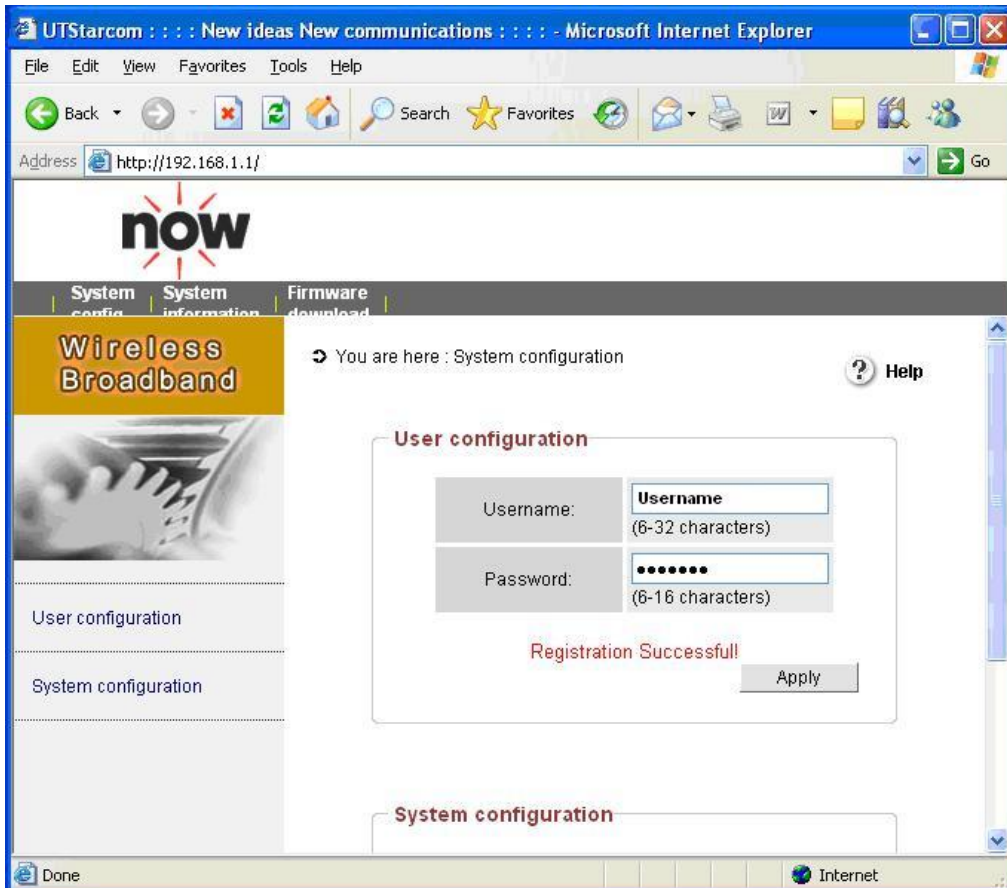


Insert your **now** Username in 'Account Name' field.

Insert your **now** Password in 'Password' field.

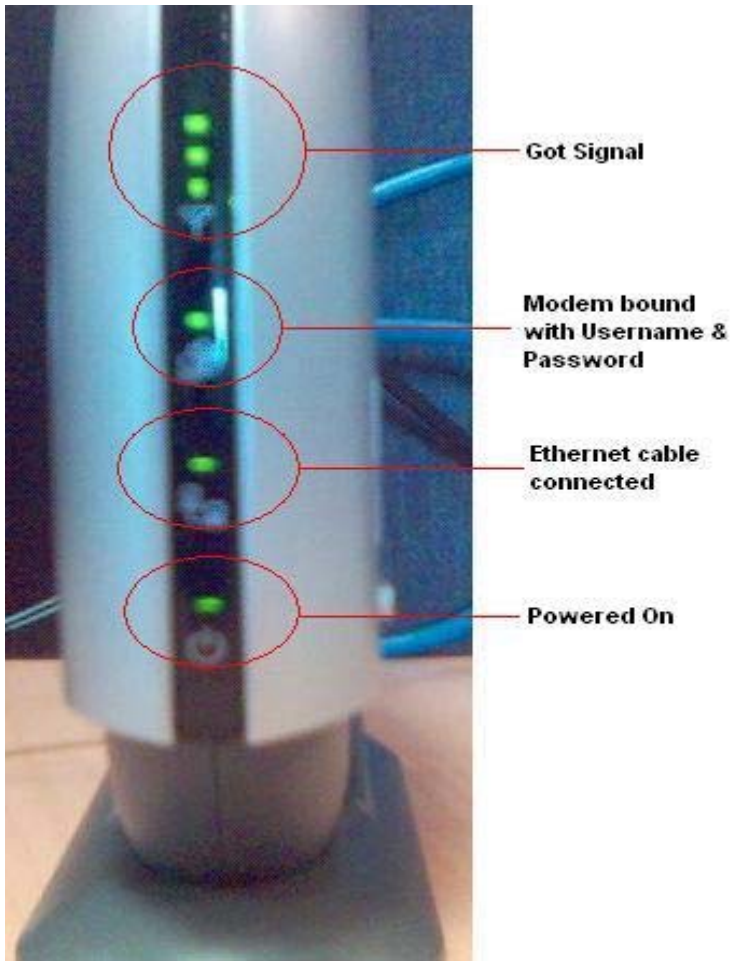
Click the 'Apply' button.

A message will confirm your successful registration
(this may take up to 30 seconds to appear).



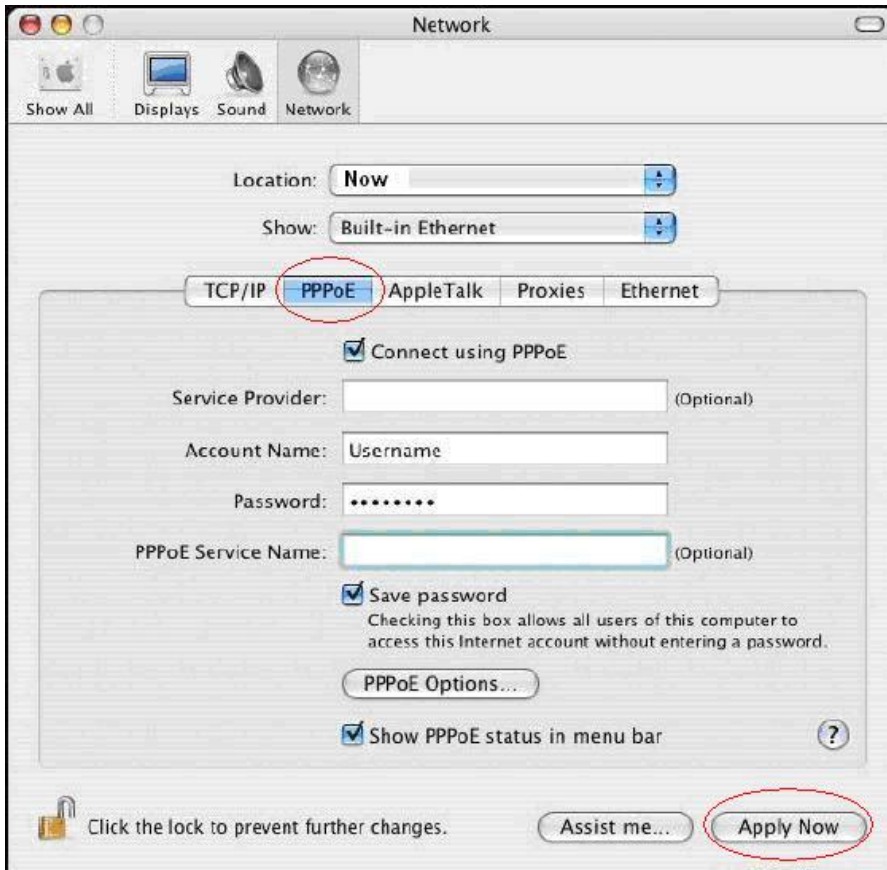
All the LED's on your modem should now be alight or flashing.

The photograph below shows a successfully connected modem.



Step 6

Now go back to the built-in Ethernet settings and click on the PPPoE tab.



Check the 'Connect Using PPPoE' box.

Insert your **now** Username in 'Account Name' field.

Insert your **now** Password in 'Password' field.

Check the 'Save password' box.

Check the 'Show PPPoE status in menu bar' box.

Click 'Apply now' (the Ethernet light on the modem will disappear)

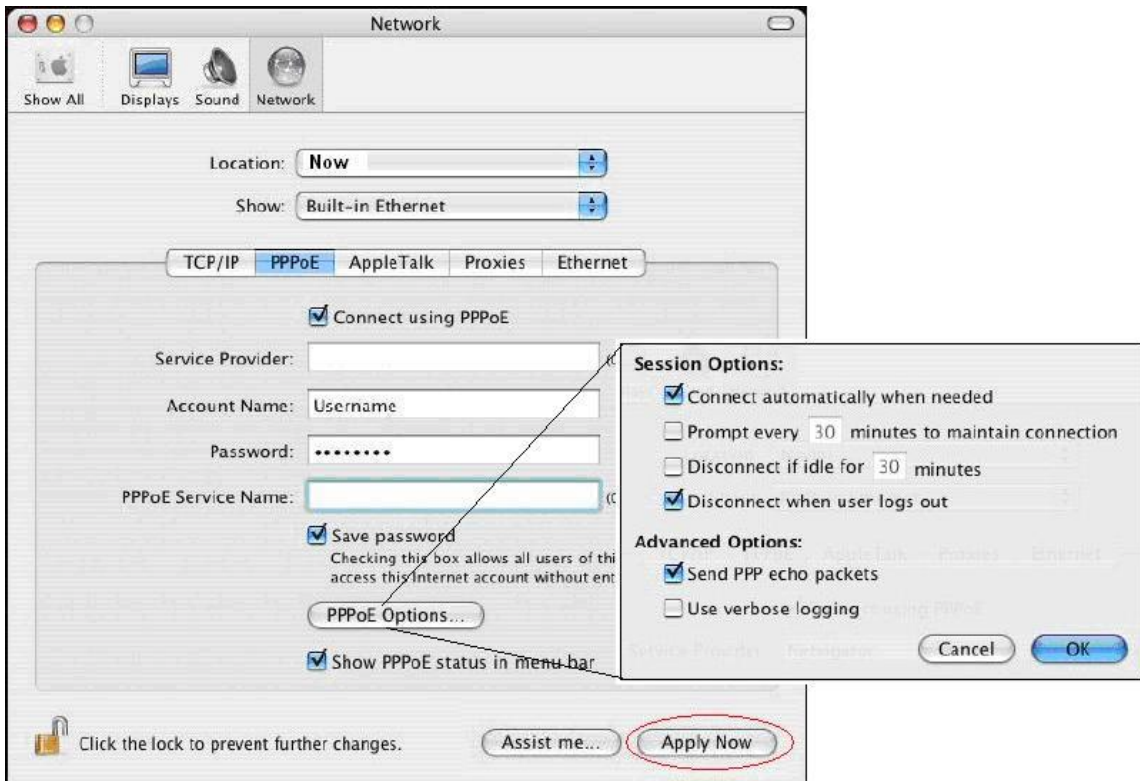
NB. Leave the 'Service Provider' and 'PPPoE Service Name' fields blank.

Step 7

Now click the 'PPPoE Options' button.

Make sure that the following options are selected:

- 'Connect automatically when needed'
- 'Disconnect when user logs out'
- 'Send PPP echo packets'



Click 'OK'.

Click "Apply now".

Step 7

Now go to the menu bar at the top of the screen and click on the connection icon on the right-hand side:



The connection icon is represented as <...>

Click this dropdown menu and select 'connect'.

Finally open a Safari page and test the connection by going to a web page.